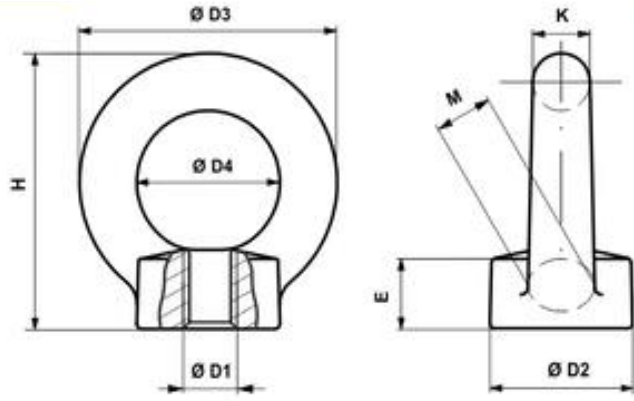


LIFTING EYE NUT – DIN582

LIFTING EYE NUTS DIN 582:2018



Body	Ø D1	Pitch	Ø D2	Ø D3	Ø D4	E	H	K	M	Weight	WLL ¹	WLL ²	WLL ³	WLL ⁴
	mm	mm	mm	mm	mm	mm	mm	mm	mm	kg –	kg	kg	kg	kg
8	M6	1	20	36	20	8,5	36	8	10	0,05	75	55	38	38
8	M8	1,25	20	36	20	8,5	36	8	10	0,05	140	100	70	70
10	M10	1,5	25	45	25	10	45	10	12	0,09	230	170	115	115
12	M12	1,75	30	54	30	11	53	12	14	0,16	340	240	170	170
16	M14	2	35	63	35	13	62	14	16	0,24	490	350	245	245
16	M16	2	35	63	35	13	62	14	16	0,24	700	500	350	350
20	M18	2,5	40	72	40	16	71	16	19	0,37	850	600	425	425
20	M20	2,5	40	72	40	16	71	16	19	0,36	1200	860	600	600
24	M22	2,5	50	90	50	20	90	20	24	0,73	1400	1000	700	700
24	M24	3	50	90	50	20	90	20	24	0,72	1800	1290	900	900
30	M27	3	65	108	60	25	109	24	28	1,34	2100	1500	1050	1050
30	M30	3,5	65	108	60	25	109	24	28	1,32	3200	2300	1600	1600
36	M33	3,5	75	126	70	30	128	28	32	2,11	3200	2300	1600	1600
36	M36	4	75	126	70	30	128	28	32	2,08	4600	3300	2300	2300
42	M39	4	85	144	80	35	147	32	38	3,15	4600	3300	2300	2300
42	M42	4,5	85	144	80	35	147	32	38	3,11	6300	4500	3150	3150
48	M45	4,5	100	166	90	40	168	38	46	5,08	6300	4500	3150	3150
48	M48	5	100	166	90	40	168	38	46	5,02	8600	6100	4300	4300



SOME INSTRUCTION ON HOW TO USE LIFTING EYE BOLTS AND LIFTING EYE NUTS CORRECTLY

Always read all instructions before using.



Lifting eye bolts and lifting eye nuts must be screwed until their bearing surface perfectly adheres to the surface of the object that needs to be lifted. Lifting eye bolts and lifting eye nuts must not be used unless they are screwed tightly.

Lifting eye bolts and lifting eye nuts must not be used with the ring's side pull.

Lifting eye bolts and lifting eye nuts must not be used with the ring's side pull.