

SU-MO



APPLICATION EXAMPLES



CHARACTERISTICS

- Fast fixing systems for profiles and metal structures, without drilling or welding.
- Fast fixing by hammering the clip in models SUCU, SUVA, SUCL and by screwing in model SUMO.
- Wide range of models for all types of profiles.
- High values of mechanic resistance in suspension systems.
- Suitable for a wide range of structural profiles.
- Applications: false ceilings, threaded rod anchoring, pipes fixed by clamps, etc.

1. INSTALLATION PROCEDURE

CODE	STEP 1	STEP 2	STEP 3	STEP 4	STEP 5
SU-MO					
	Step 1: Place the clip on the profile.				
	Step 2: Screw the clamp's bolt manually.				
	Step 3: With the help of a wrench tighten the bolt 1/2 turn.				
	Step 4: Screw the locknut manually and tighten with a wrench 1/8 turn.				
Step 5: Add the element to be suspended from the clamp.					

2. RESISTANCES

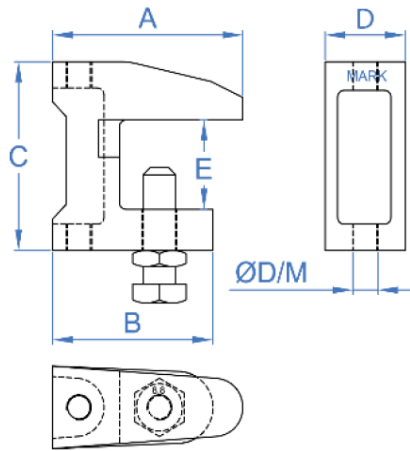
PHOTO	CODE	MAXIMUM RECOMMENDED LOAD [kg]
	SUMOP09	120
	SUMOP11	250
	SUMOP13	350
	SUMOM06	120
	SUMOM08	120
	SUMOM10	250
	SUMOM12	350

3. INSTALLATION DATA

Installation data

Code	A	B	C	D	E	Ø HOLE	INSTALLATION TYPE	INSTALLATION TORQUE
	[mm]	[mm]	[mm]	[mm]	[mm]	[mm]	[--]	[Nm]
SUMOP09	38	35	37	18	20	THROUGH HOLE 9	THREADED ROD + NUT OR CABLE	10
SUMOP11	44	41	42	21	20	THROUGH HOLE 11		15
SUMOP13	57	48	54	24	25	THROUGH HOLE 13		20
SUMOM06	38	35	37	18	20	THREADED M6	THREADED ROD + NUT	10
SUMOM08	38	35	37	18	20	THREADED M8		10
SUMOM10	44	41	42	21	20	THREADED M10		15
SUMOM12	57	48	54	24	25	THREADED M12		20

Drawing



4. RANGE

ITEM	PHOTO	CODE	DESCRIPTION	MATERIAL	COATING
1		SUMOP09	Clamp for Steel beam	A Steel	Z ZINC Zinc-pated ≥ 5µm
		SUMOP11			
		SUMOP13			
		SUMOM06			
		SUMOM08			
		SUMOM10			
SUMOM12					